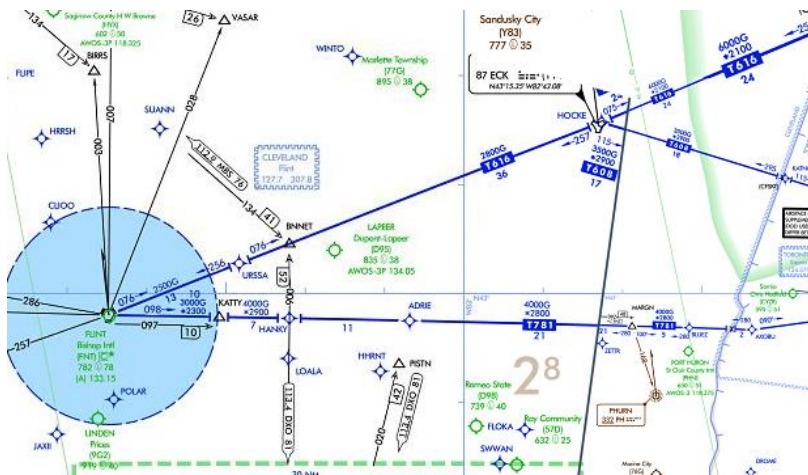


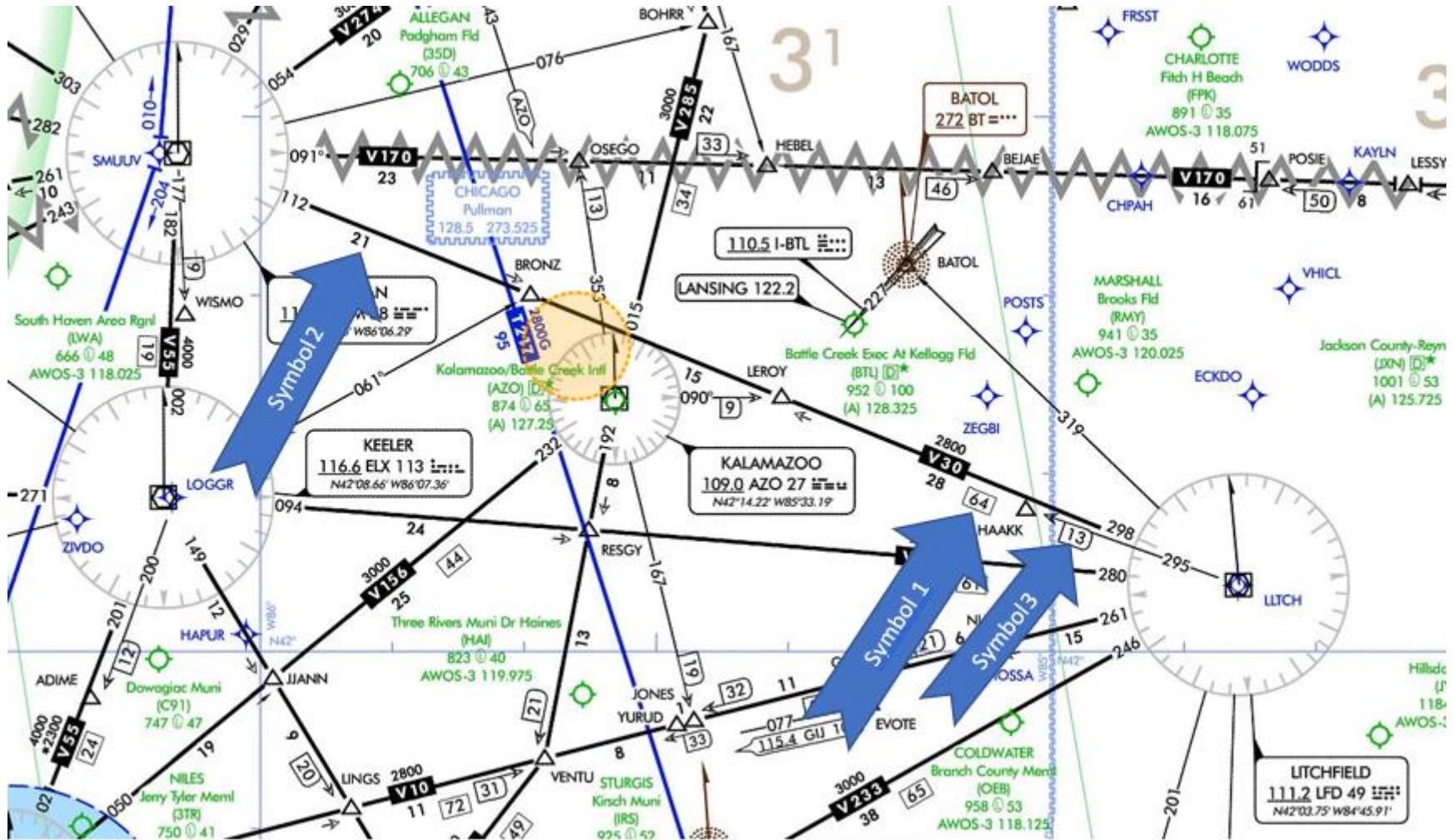
IFR Enroute Chart Symbology

1. What is the difference between blue routes (lower right) and black routes (lower left)?



2. Identify the symbols from the Figure below

- a. Symbol 1
- b. Symbol 2
- c. Symbol 3

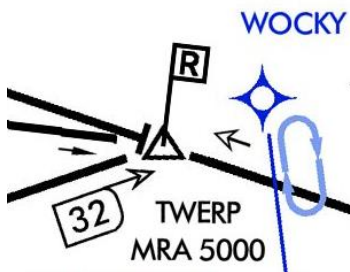


Altitude

For questions 3-5 refer to the figure below.



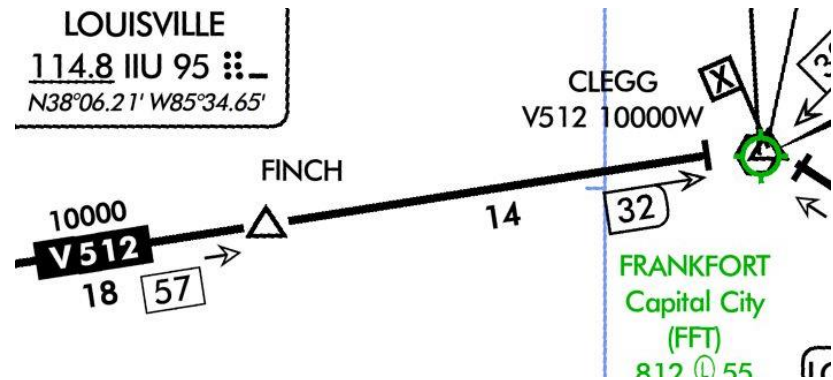
3. What type of altitude is 5,000? What is the definition?
4. What type of altitude is 2,400? What is the definition?
5. What does the large "28" indicate?



6. What does the R in a flag (see above) indicate?



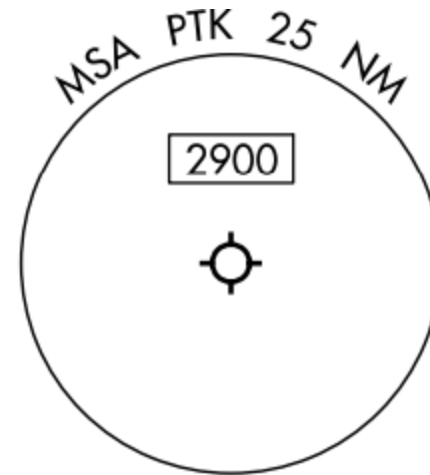
7. What does the definition of MAA (see above)?




8. What does the "X" in a flag (see above) at CLEGG intersection indicate?


Approach Plate Symbology

Rwy Idg **6520**
 TDZE **981**
 Apt Elev **981**



1. What is “TDZE” (see above)?

2. What does this symbol, , indicate in the remarks section of the approach plate? Where would a pilot find more information regarding that symbol?

3. What does this symbol, , indicate in the remarks section of the approach plate? Where would a pilot find more information regarding that symbol?

| |
|---|
| PONTIAC TOWER ★ 120.5 (CTAF)  |
|---|

4. What does the star next to Pontiac Tower indicate?

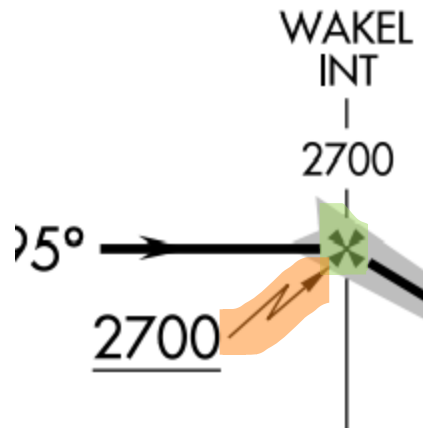
5. What does “MSA” (See above) mean?

| | | |
|----------|---|----------|
| ELEV 981 |  | TDZE 981 |
|----------|---|----------|

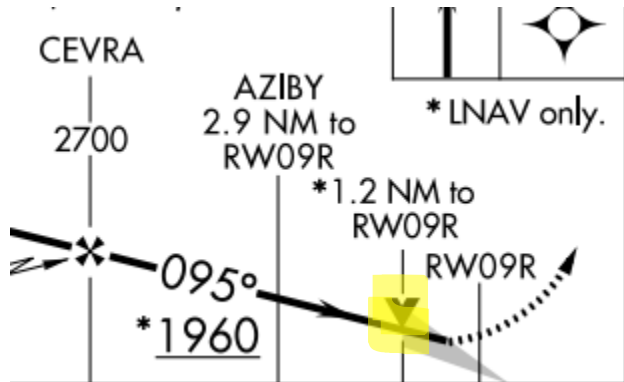
6. What does the “D” in a black box (See above) indicate?

 CIRCLING

7. What does the “C” in a black box (See above) indicate?



8. What is the difference between the lightning bolt and the Maltese cross (See highlighted above)?



9. What is the symbol highlighted in yellow above?

For questions 10-15 refer to the image below?

| CATEGORY | A | B | C | D |
|--|----------------------------|-----------------------|-------------------------------|------------------------|
| LPV DA | 1181/24 200 (200-1/2) | | | |
| LNAV/VNAV DA | 1580-1 1/2 599 (600-1 1/2) | | | |
| LNAV MDA | 1420/40 439 (500-3/4) | | | 1420/50 439 (500-1) |
| <input checked="" type="checkbox"/> CIRCLING | 1500-1 519 (600-1) | 1540-1 559 (600-1) | 1640-1 3/4 659 (700-1 3/4) | 1640-2 659 (700-2) |

- Which approach category is the Archer in? What are the parameters that categorized the Archer in that Category?
- What does LPV stand for? What type of equipment is required to fly an approach to LPV minimums?
- What does the "1181" indicate in the LPV minimums section?
- What does the "24" indicate in the LPV minimums section?
- What does the "(200-1/2)" indicate in the LPV minimums section?
- If the G5's on the Archer's fail, which minimums does the pilot downgrade to?